

Getting Started with

SNAP!™

for FLEETWOOD™
Reply Mini or Worldwide



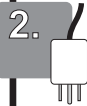
Software Install



You will install **SNAP Hardware and Software independently of each other. Regardless of what you load first, both will need to complete their installation wizards before you can poll any questions.**

1. Insert Snap installation CD into your computer's CD-ROM drive.
2. The Setup program should auto-run. If it does not, use the 'Start' menu button and 'Run' option to browse to the CD-ROM drive and double-click the 'Setup.exe' file to launch the installation.
3. Follow the on-screen instructions to complete the setup. The ARS SNAP icon will appear on the desktop. Complete the hardware setup below and then start SNAP.

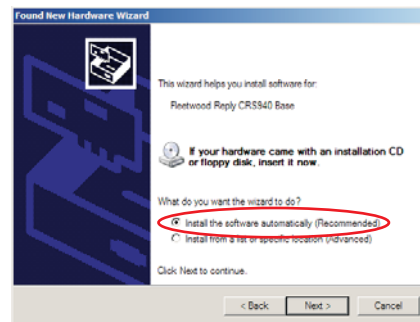
Hardware Setup



Unpack all components and position Wireless System base station/interface within cabling distance of your computer. Plug in the USB cable that accompanies your 940 Base Station. The USB also supplies power and you should see a blinking green light on top of the base station. Windows will automatically run the New Hardware Wizard, Check 'NO, not at this time' and click NEXT. On the next prompt, select 'Install the software automatically' and click NEXT.

The software will search for the driver files. Be sure your SNAP CD is still in the drive for proper installation.

Once you have completed this step you should see the FINISH screen telling you the wizard has completed the install, Click Finish to continue.



NOTE: You will have to run the install wizard twice! One will install the proper drivers needed to run the keypads and one will assign your 940 base station to the correct port. If you click cancel at any time during either of these installs, your keypad system will not run properly.



Attach the Software Security Key/Hasp to the computer. A USB-type key can attach to any open USB port. The software will need to see the key to be in full polling mode. Without the Hasp, SNAP will be in demonstration mode and will only poll keypads 1-5.


SNAP!™ Quick Steps Guide

Quick Steps

1. Once you have successfully installed the SNAP software and hardware, open the program and select the 'Test Keypads' button. You will see a diagnostic menu with small boxes. These are your available keypads. As you punch numbers on your keypads, the data should appear within this area. If you are not seeing data, you may have forgotten to run one of the hardware installations.
2. The first time you run SNAP, it is recommended that you familiarize yourself with its functions. You can tab through the Start, Options and Results tab to get an overview of SNAP features such as graphs, clocks and image export that can be selected.
3. You are now ready to select YOUR PowerPoint presentation and begin modifying clocks and graph options. Click the Browse button on the Start Menu to select your PowerPoint and select open.
4. Under 'Recent Presentations' you should see a Red Drop-down Arrow, with 'Introduction to SNAP' selected. Click 'Start Slide Show' to get an overall summary of SNAP's functions.



NOTE: Before you click 'Start Slide Show' with your presentation, you will want to select the OPTIONS tab and PREVIEW your graph results. If you want to use the PowerPoint's Master image you will check this box under 'Other Options'. You can then select a graph and timer color scheme by using the drop down menus. You can adjust these any number of times. Clicking the PREVIEW button will run a mock poll, showing Timer location as well as graph specifics.

5. When you are satisfied with the appearance of the graph/timer, return to the 'Start' tab and then click the 'Start Slide Show' button.
6. Proceed through your PowerPoint presentation as you normally would. The Poller Icon will appear in the lower right hand corner of any slide that includes an enumerated list. If this is not a polling slide, simply advance to the next slide. If the selected slide is a polling question, left click anywhere on the poller icon to start polling and display results. After results are displayed and you move to the next slide, you can redisplay results or repoll by left-clicking or right-clicking on the trigger. 
7. To view online help for SNAP, press the <F1> key whenever the presentation is loaded or access the help menu through the help button on the main menu.

PowerPoint is a registered trademark of Microsoft Corporation.

Equipment

940 MODEL



Security Key/HASP

USB Cable



Worldwide Keypads



MINI Keypads

